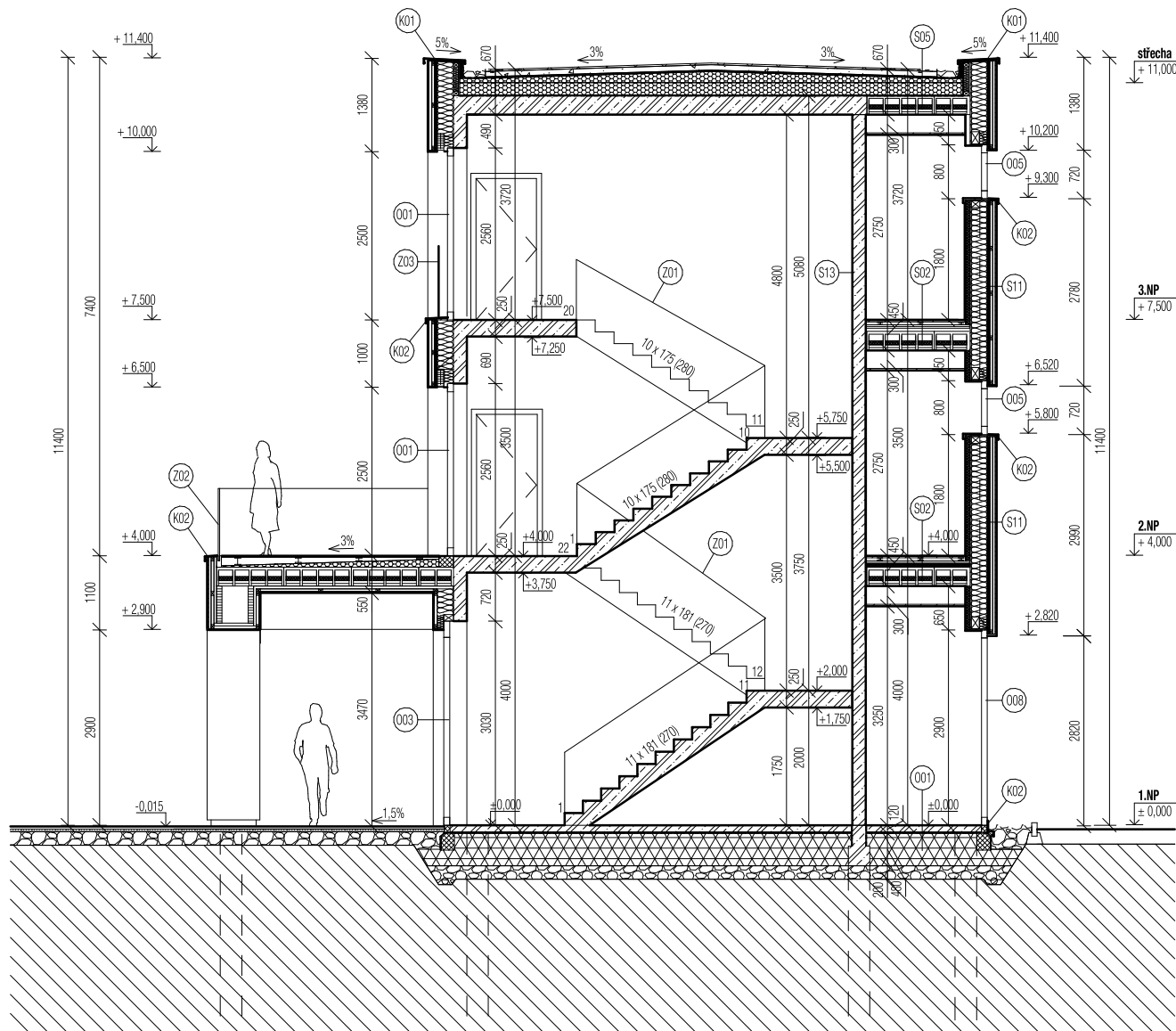
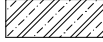

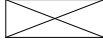





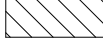


ŘEZ



LEGENDA MATERIÁLŮ

-  Železobeton
-  Dřevěné prvky - lamelové lepené dřevo
-  Dřevěné prvky - latě
-  Tepelná izolace - minerální vlna
-  Tepelná izolace - EPS
-  Tepelná izolace - pěnosklo
-  Tepelná izolace - kompozit
-  Štěrkový podsyp, frakce 16/32
-  Rostlý terén

±0,000 = 534.7 m.n.m. (Bpv)

M 1:100

