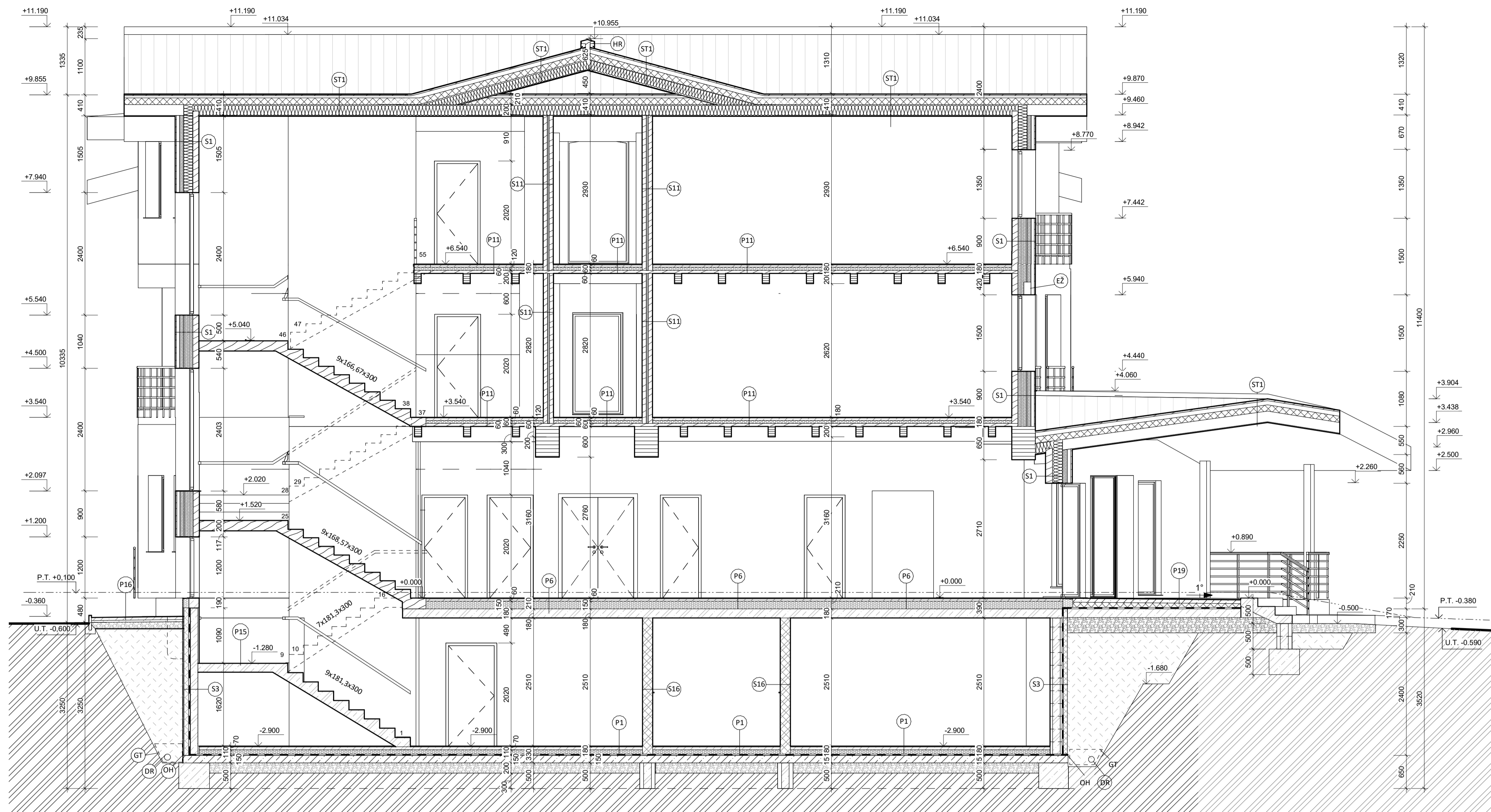


REZ B-B' M 1:50



SKLADBY PODLÁH

Table detailing floor construction details (SKLADBY PODLÁH) with annotations P1 through P19. Includes descriptions like 'PODLAHA NA TERÉNE', 'PODLAHA NAD TEMPEROVANÝM PRIESTOROM', and 'PODLAHA NAD VONKAJŠÍM PRIESTOROM'. Lists materials, dimensions, and manufacturers.

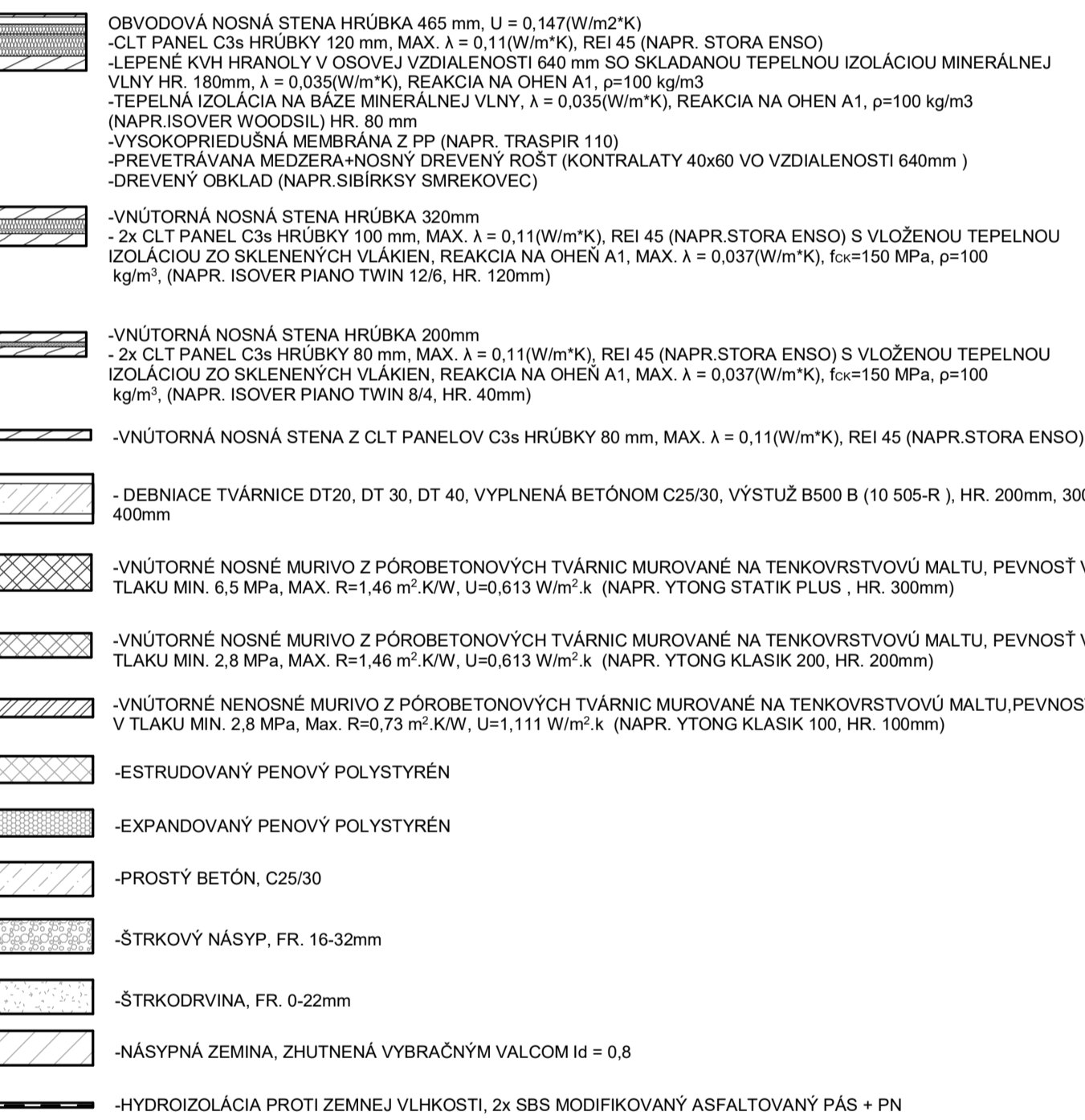
SKLADBY STIEN

Table detailing wall construction details (SKLADBY STIEN) with annotations S1 through S24. Includes descriptions like 'STENA, OBVODOVÁ-NOSNÁ, CL-T-FO', 'STENA, VNÚTORNÁ-NOSNÁ, VCO-NF', and 'STENA, VNÚTORNÁ-NOSNÁ, VCO-VCO'. Lists materials, dimensions, and manufacturers.

SKLADBY STIECH

Table detailing roof construction details (SKLADBY STIECH) with annotations S1 through S24. Includes descriptions like 'STRECHA, SEDLOVÁ SO SKLONOM 5-15°', 'STRECHA, SEDLOVÁ SO SKLONOM 20°', and 'STRECHA, INTENZÍVNA VEGETÁCIA HR. 640 mm'. Lists materials, dimensions, and manufacturers.

LEGENDA MATERIÁLOV



POZNÁMKY:

List of notes (POZNÁMKY) providing additional information and instructions for the construction details, such as 'PRED ZAHÁJENÍM BETONÁŽE ZÁKLADOV TREBA REALIZOVAT OSADENIE ZEMENIA BLESKOVOZUDU'.

Project information box containing 'BAKALÁRSKA PRÁCA', 'PENZIÓN', author details (Ing. PETER JURÁŠ, PhD.), date (12.11.2020), and university information (ŽILINSKÁ UNIVERZITA V ŽILINE).